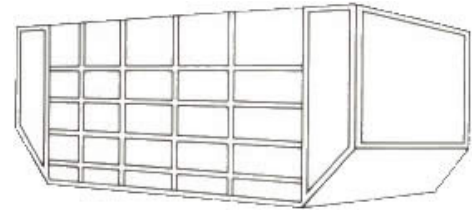


# Air Freight Containers

## LD26 AAF

Carried on: Boeing 747/777 – DC10

Volume: 425 cu.ft. (13 cu.m.)  
Weight: 286 Kg. / 6033 Lbs.  
Maximum Gross Weight: 474/DC10: 6033 Kg. / 13300 Lbs.  
777/DC10: 4626 Kg. / 10501 Lbs.  
Dimensions: 160" x 66" x 125" x 88"



## LD29 AAU

Carried on: Boeing 747

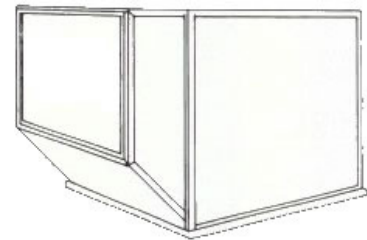
Volume: 485 cu.ft (14.8 cu.m.)  
Weight: 265 Kg. / 593lbs.  
Maximum Gross Weight: 4626 Kg. / 10501 Lbs.  
Dimensions: 186" x 29" x 62" x 125" x 88"



## LD3 AKE

Carried on: Boeing 747/767/777 – DC10

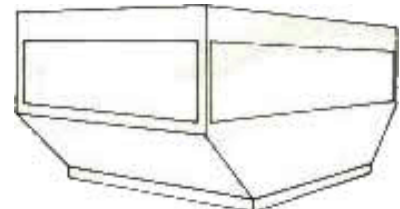
Volume: 150 cu.ft. (4.2 cu.m.)  
Weight: 72 Kg. / 158 Lbs.  
Maximum Gross Weight: 1588 Kg. / 3493 Lbs.  
Dimensions: 79" x 43" x 64" x 61.5" x 60.4"



## AKH

Carried on: Airbus A320

Volume: 120 cu.ft. (3.4 cu.m.)  
Weight: 76 Kg. / 167 Lbs.  
Maximum Gross Weight: 1134 Kg.  
Dimensions: 26.4" x 96" x 46" x 61.5" x 60.4"



### IMPORTANT:

These measures are published for informative purposes only.  
Exact dimensions and weight limitations will vary by manufacturer.

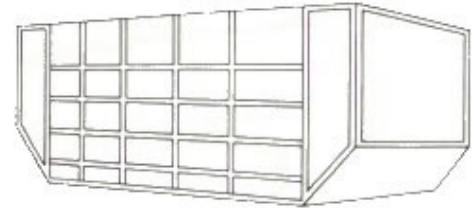
1 / 4

# Air Freight Containers

## LD6 ALF

Carried on: Boeing 747/777 – DC10

Volume: 310 cu.ft. (8.8 cu.m)  
 Weight: 172 Kg. / 378 Lbs.  
 Maximum Gross Weight: 747/DC10: 317 Kg. / 6985 Lbs.  
 Dimensions: 41" x 160 x 46" x 125" x 64"



## LD11 ALP/PLA

Carried on: Boeing 747/777 – DC10

Volume: ALP 240 cu.ft. (6.8 cu.m) / PLA 245 cu.ft. (7.0 cu.m)  
 Weight: ALP 185 Kg. /407 Lbs. / PLA 7 3 Kg. /161 Lbs.  
 Maximum Gross Weight: ALP DC10/747: 3176 Kg. /697 Lbs. /  
 PLA DC10/747: 3176 KG/6987 Lbs.  
 Dimensions: 60.4" x 64" x 125"



## AMA

Carried on: Boeing 747F

Volume: 580 cu.ft. (16.4 cu.m.)  
 Weight: 350 Kg. /770 Lbs.  
 Maximum Gross Weight: 6804 Kg. /15000 Lbs.  
 Dimensions: 96" x 96" x 125"



### IMPORTANT:

These measures are published for informative purposes only.  
 Exact dimensions and weight limitations will vary by manufacturer.

# Air Freight Containers

## LD2 APE

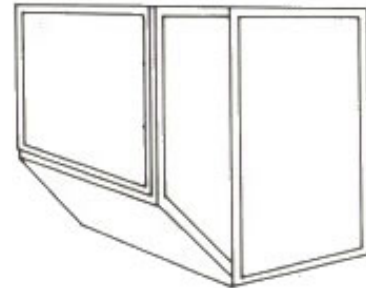
Carried on: **Boeing 767**

Volume: 120cu.ft. (3.5cu.m.)

Weight: 70Kg. /154Lbs.

Maximum Gross Weight: 1225Kg. /2700Lbs.

Dimensions: 45" x 61.5" x 64" x 47 x 60.4"



## LD1 AKC

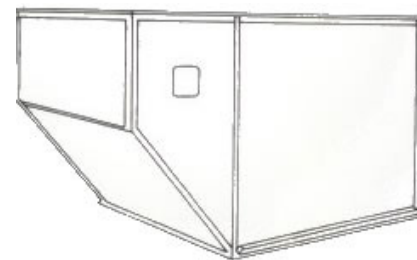
Carried on: **Boeing 747/767**

Volume: 170 cu.ft (4.8 cu.m.)

Weight: 85 Kg. /187 Lbs.

Maximum Gross Weight: 1588 Kg. / 3493 Lbs.

Dimensions: 92" x 30" x 64" x 61.5" x 60.4"



## LD9 AAP

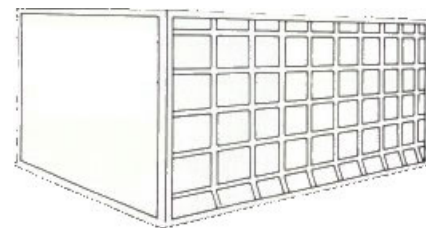
Carried on: **Boeing 747/777 – DC10**

Volume: 350 cu.ft. (10.0)

Weight: 85 Kg. / 187 Lbs.

Maximum Gross Weight: 1588 Kg. / 3493 Lbs.

Dimensions: 92" x 30" x 64" x 61.5" x 60.4"



### IMPORTANT:

These measures are published for informative purposes only.  
Exact dimensions and weight limitations will vary by manufacturer.

3 / 4

# Air Freight Containers

## PMC

Carried on: Boeing 747/767/77

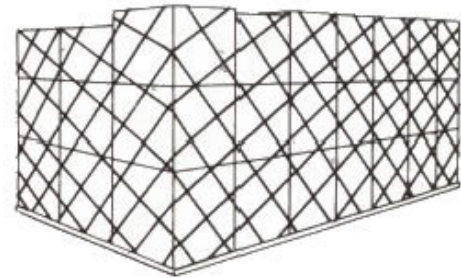
Volume: 450 cu.ft. (12.7 cu.m.)

Weight: 130 Kg. / 286 Lbs.

Maximum Gross Weight: 747: 5050 Kg. / 11110 Lbs.

767: 5103Kg. /11227Lbs. / 777/DC10: 5103 Kg. /11584 Lbs.

Dimensions: 96" x 64" x 125"



## PAP/PIP/PAG

Carried on: Boeing 747/767/777 – DC10

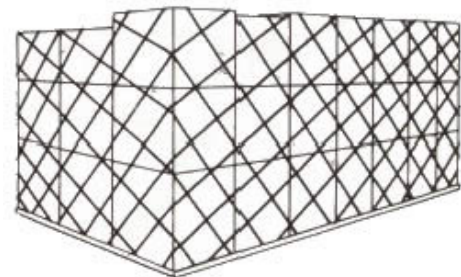
Volume: 420 cu.ft. (11.9 cu.m.)

Weight: 120Kg. / 264 Lbs.

Maximum Gross Weight: 747 / DC10: 6033 Kg. / 13300 Lbs.

767: 5103 Kg. / 11227 Lbs. /777/DC10: 4626 Kg. / 10501 Lbs.

Dimensions: 88" x 64" x 125"



## XAW

Carried on: Boeing 747/777 – DC10

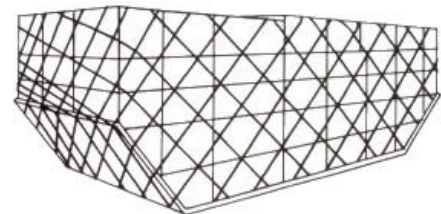
Volume: 747: 490 cu.ft. (14.0 cu.m.)

DC10: 420 cu.ft. (11.9 cu.m.)

Weight: 170 Kg. /37Lbs.

Maximum Gross Weight: 747/DC10: 5000 Kg. /11000 Lbs.

Dimensions: 88" x 64" x 125"



### IMPORTANT:

These measures are published for informative purposes only.  
Exact dimensions and weight limitations will vary by manufacturer.

4 / 4